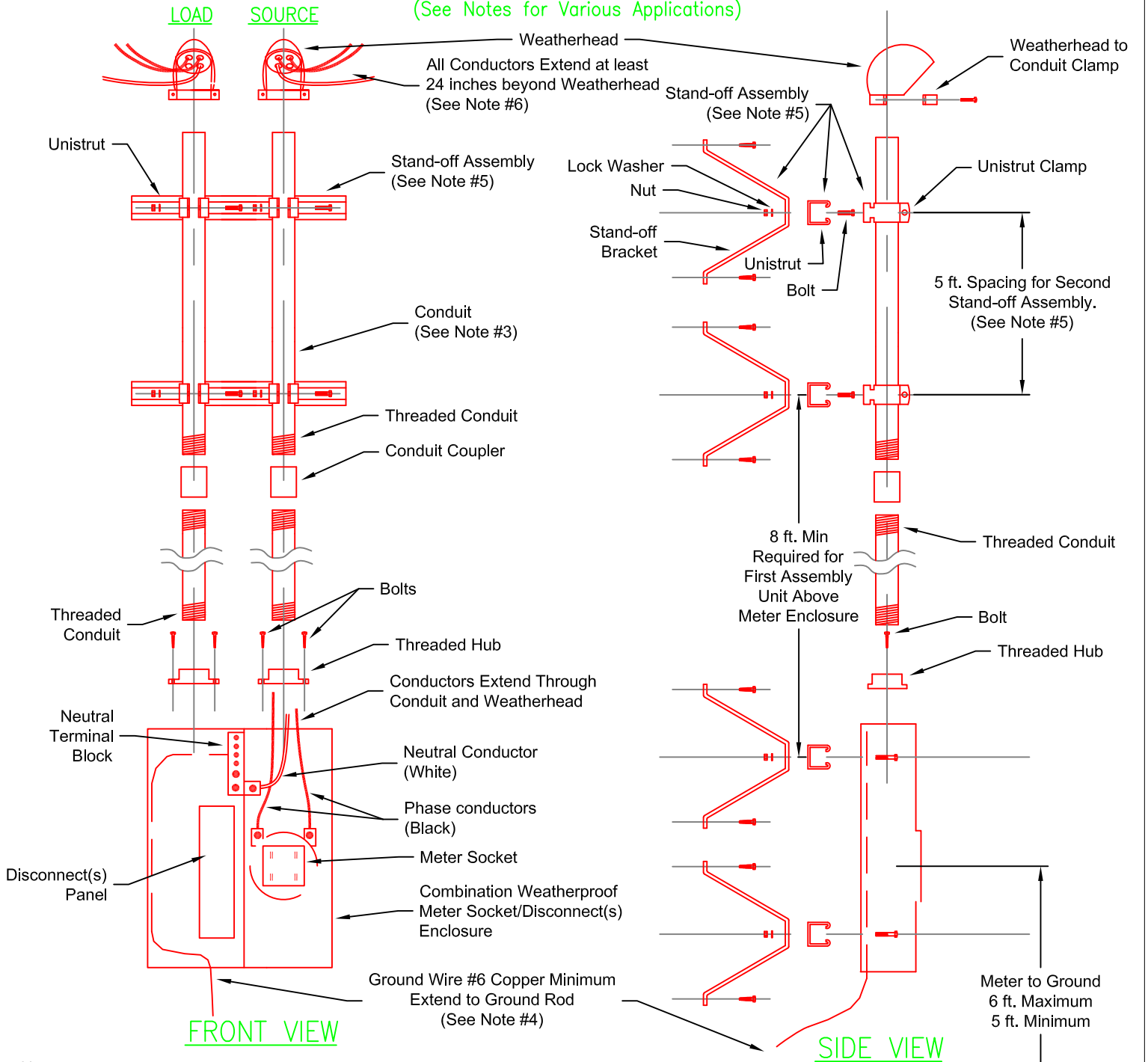


# OVERHEAD SOURCE AND LOAD SERVICE INSTALLATION PARTS ASSEMBLY GUIDE

(See Notes for Various Applications)



**Notes:**

1. All facilities (shown in Red) to furnished, assembled and installed by consumer. Installation, if not by Consumer, shall be by a licensed, qualified and trained person.
2. Dwellings require a service installation for 100 or more amperes.
3. 15 ft. of conduit is required for a standard 30 ft pole without a transformer or a 35 ft. pole with a transformer. Add another 3 ft. of conduit for a 40 ft. pole with a transformer.
4. The grounding electrode system must meet or exceed the requirements of the National Electrical Code Article 250 and must be approved by local building inspector.
5. Stand-off Assemblies: Two assemblies are required above the meter socket/disconnect(s) enclosure and two assemblies are required for the enclosure. First assembly above the meter socket enclosure shall be 8 ft. minimum above enclosure. Second assembly is required 17 ft. above the enclosure.
6. Service installation on a pole with a transformer will require all conductors to extend beyond the weatherhead at least 7 ft.

		<p><b>MOON LAKE ELECTRIC ASSOC., INC.</b> Roosevelt, Utah 84086</p>	
REV.	DESCRIPTION	SOURCE AND LOAD METER LOOP POLE MOUNTED	
0	ISSUED FOR USE.	DRN. BY - P.CORUN.	DATE - 07/14/2016 SCALE - N.T.S.
		CHKD -	APPRD - P.CORUN.
		DRAWING # SOURCELOAD	