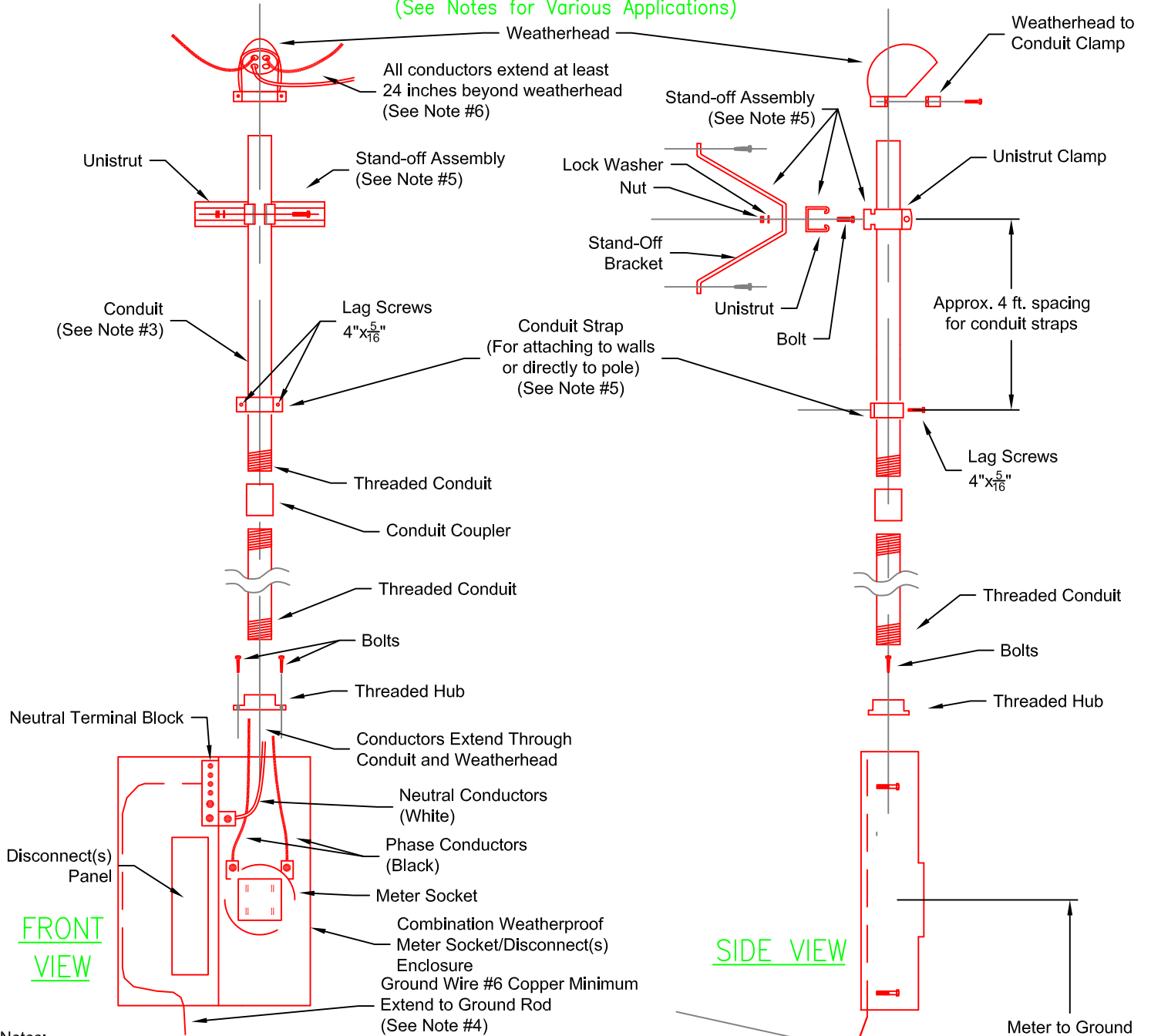
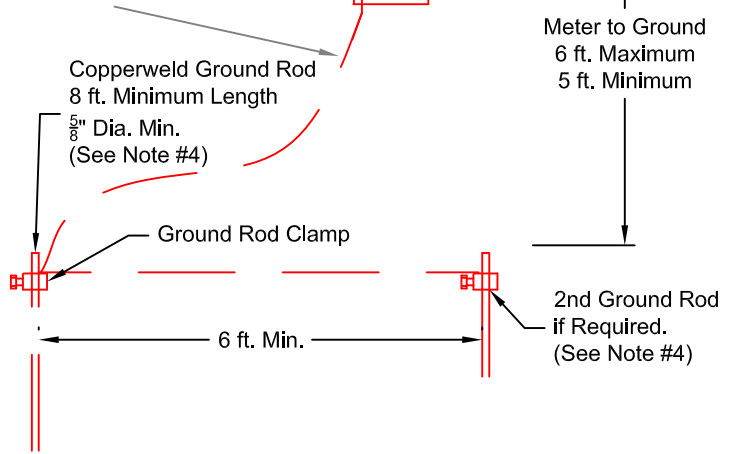



# TYPICAL SERVICE INSTALLATION PARTS ASSEMBLY GUIDE

(See Notes for Various Applications)



- Notes:
1. All facilities (shown in Red) to be furnished, assembled and installed by Consumer unless noted otherwise in Note #5. Installation, if not by Customer, shall be by a licensed, qualified and trained person.
  2. The ratings and sizes shown in the table apply to residential services and some small single-phase services. Refer to National Electrical Code for other service applications. Dwellings require a minimum rating of 100 amperes.
  3. 15 ft. of conduit is required for a standard 30 ft. pole without a transformer, or a 35 ft pole with a transformer. **Add another 3 ft of conduit for a 40 ft pole with a transformer.** 2 inch rigid galvanized conduit required for above-ground applications.
  4. The grounding electrode system must meet or exceed the requirements of National Electrical Code Article 250 and must be approved by local building inspector.
  5. Stand-off Assembly: Service installation with conduit larger than 2 inch diameter, or secondary service installation on pole, or service installation on a pole with a transformer must be installed on stand-off assemblies. Two assemblies are required for the enclosure. First assembly above meter socket enclosure 8 ft. above enclosure. Second assembly 13 ft. above enclosure. With 18 ft of conduit a third assembly is required 17 ft. above the enclosure.
  6. Service installation on a pole with a transformer will require all conductors to extend beyond the weatherhead at least 7 ft.



REV. DESCRIPTION		 <b>MOON LAKE ELECTRIC ASSOC., INC.</b> Roosevelt, Utah 84066		DRAWING #		
0	ISSUED FOR USE.				TYPICAL SERVICE INSTALLATION PARTS ASSEMBLY GUIDE	
DRN. BY-	P.CORUN.	DATE -	04/21/2016	SCALE -	N.T.S.	PARTS
CHKD-		APPRD-	P.CORUN.			