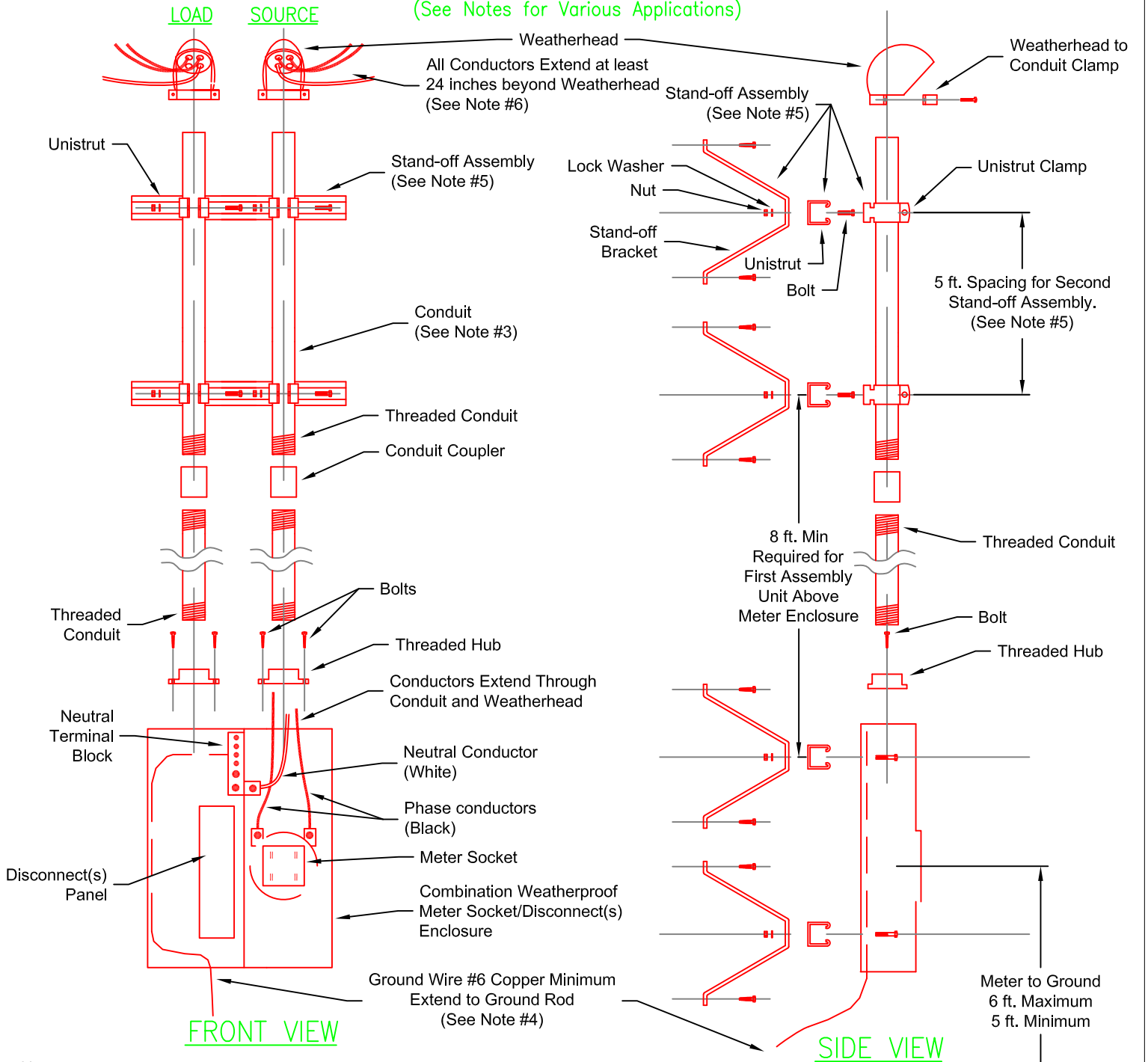



OVERHEAD SOURCE AND LOAD SERVICE INSTALLATION PARTS ASSEMBLY GUIDE

(See Notes for Various Applications)



Notes:

1. All facilities (shown in Red) to furnished, assembled and installed by consumer. Installation, if not by Consumer, shall be by a licensed, qualified and trained person.
2. Dwellings require a service installation for 100 or more amperes.
3. 15 ft. of conduit is required for a standard 30 ft pole without a transformer or a 35 ft. pole with a transformer. Add another 3 ft. of conduit for a 40 ft. pole with a transformer.
4. The grounding electrode system must meet or exceed the requirements of the National Electrical Code Article 250 and must be approved by local building inspector.
5. Stand-off Assemblies: Two assemblies are required above the meter socket/disconnect(s) enclosure and two assemblies are required for the enclosure. First assembly above the meter socket enclosure shall be 8 ft. minimum above enclosure. Second assembly is required 17 ft. above the enclosure.
6. Service installation on a pole with a transformer will require all conductors to extend beyond the weatherhead at least 7 ft.

REV. DESCRIPTION		 MOON LAKE ELECTRIC ASSOC., INC. Roosevelt, Utah 84086		DRAWING #
0	ISSUED FOR USE.			
DRN. BY:	P.CORUN.	DATE:	07/14/2016	SCALE: N.T.S.
CHKD.:		APPV.:	P.CORUN.	
SOURCE AND LOAD METER LOOP POLE MOUNTED				