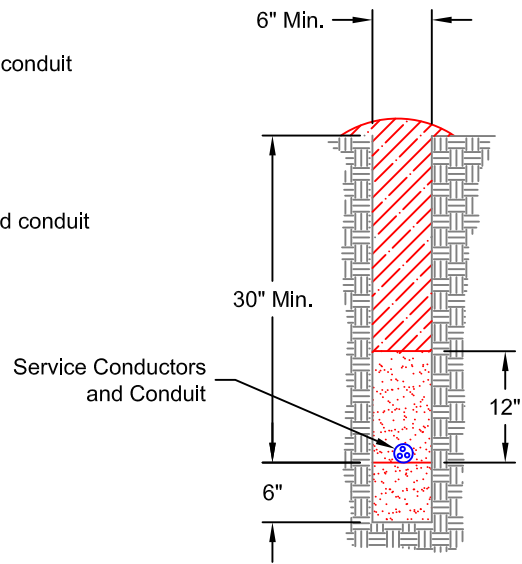
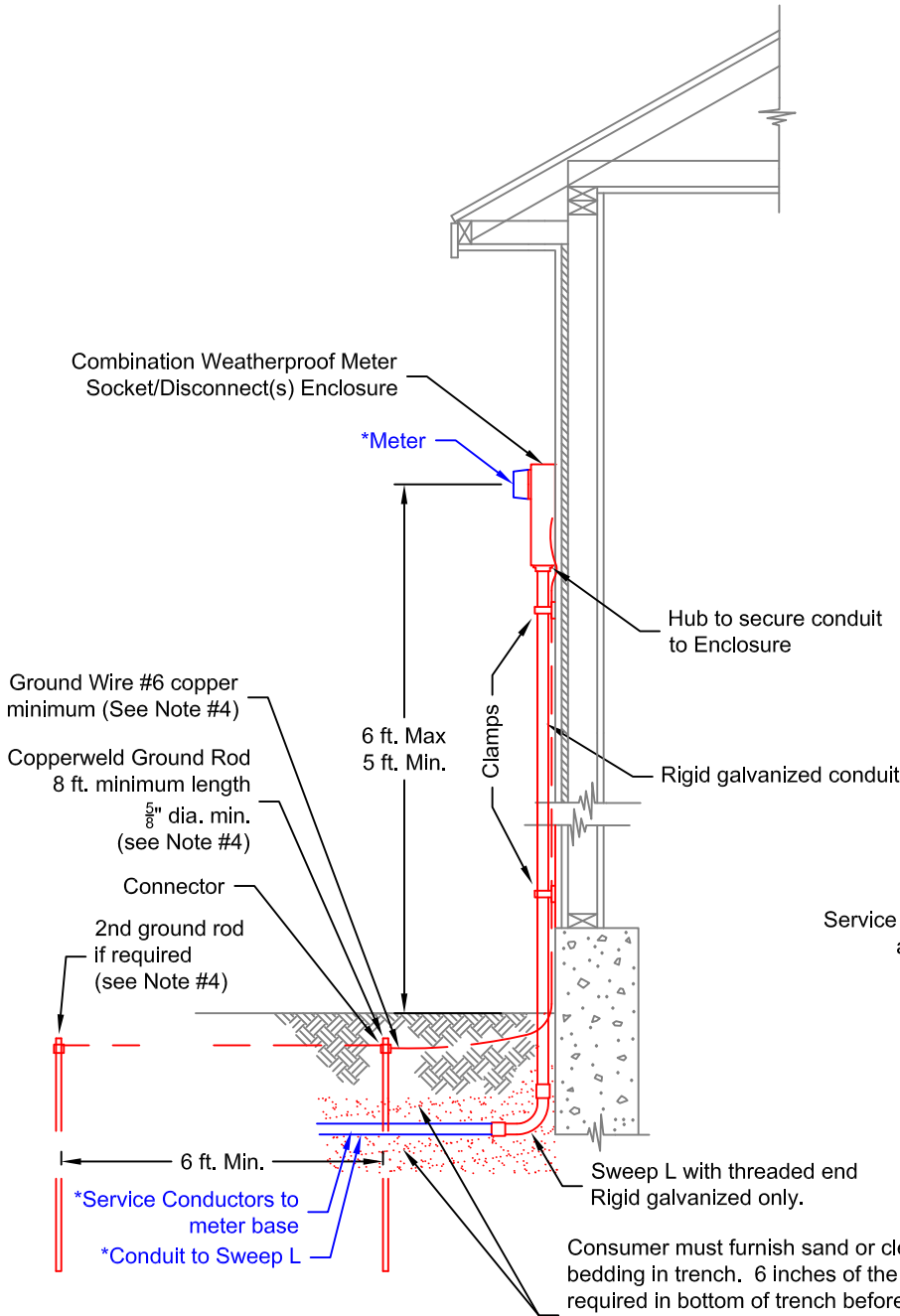


# UNDERGROUND SERVICE INSTALLATION ON BUILDING

A CERTIFICATION THAT CONSUMER WIRING AND EQUIPMENT CONFORMS TO ALL APPLICABLE CODES WILL BE REQUIRED FROM THE CITY OR COUNTY BUILDING INSPECTOR PRIOR TO MOON LAKE ELECTRIC ENERGIZING THE SERVICE. CONSUMER MUST FURNISH COPY OF THIS CERTIFICATION TO MOON LAKE.



TRENCHING SPEC.

Consumer must furnish sand or clean rock free soil for bedding in trench. 6 inches of the bedding material is required in bottom of trench before service cable and conduits are installed and bedding material must be available near trench to cover cable with 12 additional inches. (See Note #3)

Notes:

1. All facilities (shown in Red) to be furnished, assembled and installed by **Consumer** unless noted otherwise in Note #5. Installation, if not by Customer, shall be by a licensed, qualified and trained person.
2. The ratings and sizes shown in the table apply to residential services and some small single-phase services. Refer to National Electrical Code for other service applications. Dwellings require a minimum rating of 100 amperes.
3. Consumer is required to supply trench, bedding material and backfill as per trenching specifications shown. Trench should be as straight and level as possible.
4. The grounding electrode system must meet or exceed the requirements of the National Electrical Code Article 250 and must be approved by the local building inspector having jurisdiction.
5. Facilities (Shown in Blue) to be furnished, assembled and installed by **Moon Lake.**

SERVICE EQUIPMENT	MINIMUM CONDUIT SIZE
Ratings in Amperes	Rigid Only
100	2"
200	3"

<p><b>MOON LAKE ELECTRIC ASSOC., INC.</b> Roosevelt, Utah 84066</p>		DRAWING # <b>UGDLOOP</b>
REV. 0 DESCRIPTION ISSUED FOR USE.	SERVICE ENTRANCE SPECIFICATIONS UNDERGROUND BUILDING-MOUNTED	
DRN. BY- P.CORUN. CHD-	DATE- 04/21/2016 APPD- P.CORUN.	SCALE- N.T.S.