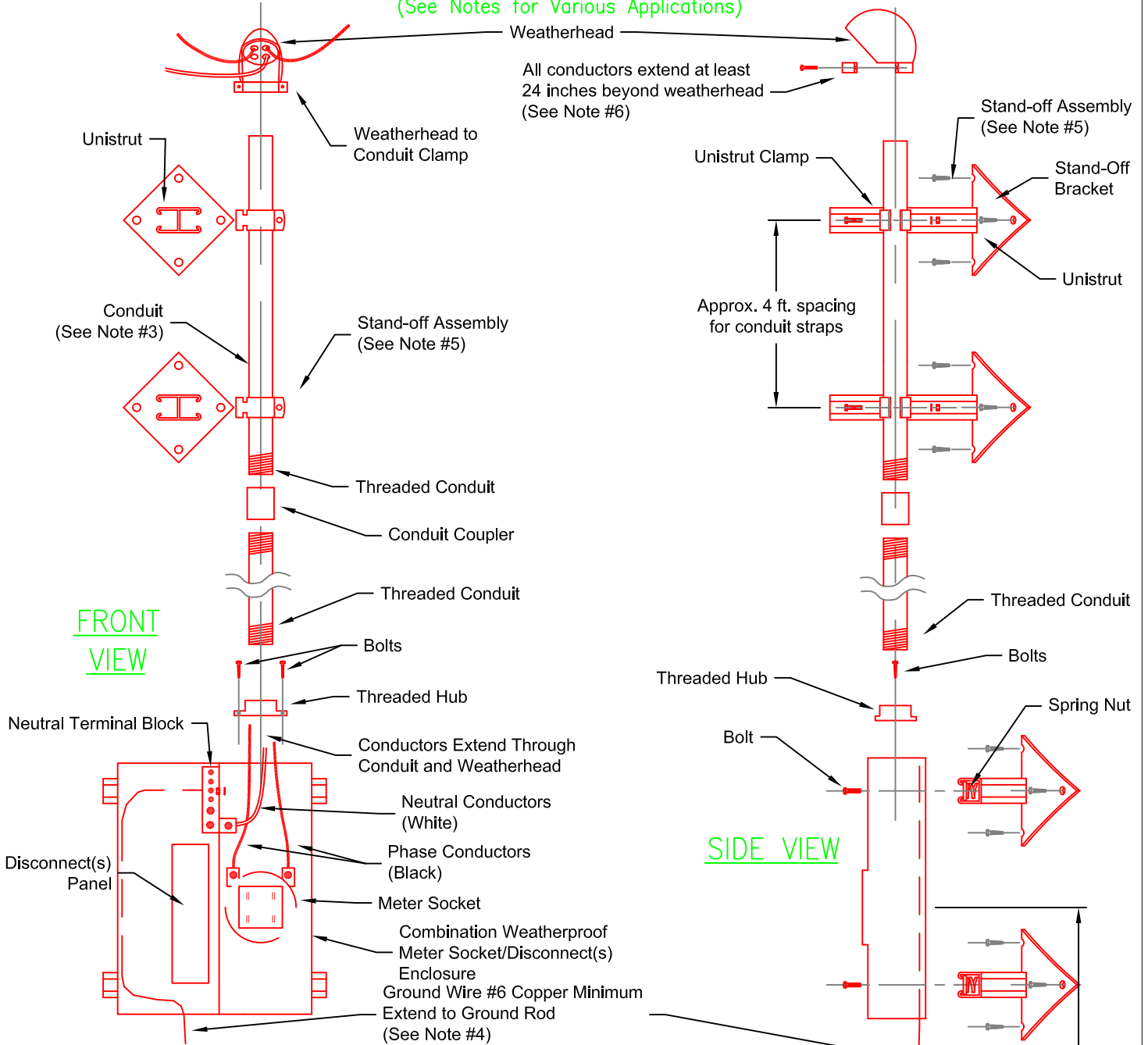


TYPICAL SERVICE INSTALLATION PARTS ASSEMBLY GUIDE

(See Notes for Various Applications)

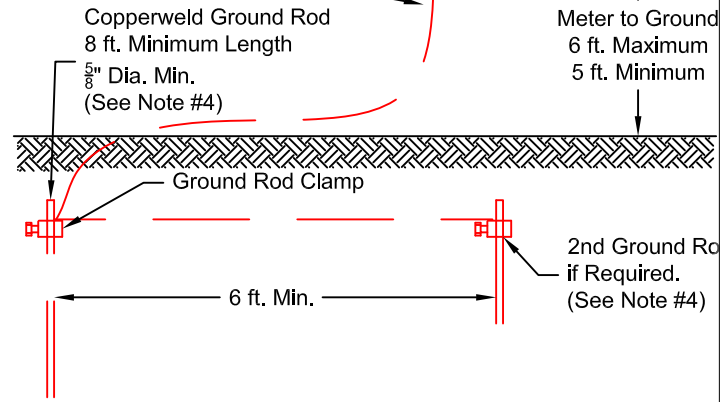


FRONT
VIEW

SIDE
VIEW

Notes:

1. All facilities (**shown in Red**) to be furnished, assembled and installed by Consumer unless noted otherwise in Note #5. Installation, if not by Customer, shall be by a licensed, qualified and trained person.
2. Final interconnection between Moon Lake and Consumer shall be made by Moon Lake.
3. The ratings and sizes shown in the table apply to residential services and some small single-phase services. Refer to National Electrical Code for other service applications. Dwellings require a minimum rating of 100 amperes.
4. 15 ft. of conduit is required for a standard 30 ft. pole without a transformer, or a 35 ft pole with a transformer. **Add another 3 ft of conduit for a 40 ft pole with a transformer.** 2 inch rigid galvanized conduit required for above-ground applications.
5. The grounding electrode system must meet or exceed the requirements of National Electrical Code Article 250 and must be approved by local building inspector.
6. Stand-off Assembly: Service installation with conduit larger than 2 inch diameter, or secondary service installation on pole, or service installation on a pole with a transformer must be installed on stand-off assemblies. Two assemblies are required for the enclosure. First assembly at 1 ft. above meter socket enclosure. Second assembly at 9 ft. above enclosure. With 18 ft. of conduit a third assembly is required 17 ft. above the enclosure.
7. Service installation on a pole with a transformer will require all conductors to extend beyond the weatherhead at least 7 ft.



| | | | |
|------|-----------------|---|------------------|
| | | <p style="text-align: center; margin: 0;">MOON LAKE ELECTRIC ASSOC., INC. <small>Roosevelt, Utah 84066</small></p> | |
| REV. | DESCRIPTION | TYPICAL SERVICE INSTALLATION PARTS ASSEMBLY GUIDE | |
| 0 | ISSUED FOR USE. | DRN. BY: M. TERVORT | DATE: 05/18/2023 |
| | | SCALE: N.T.S. | DRAWING # |
| | | CHKD: M. TERVORT | PARTS |