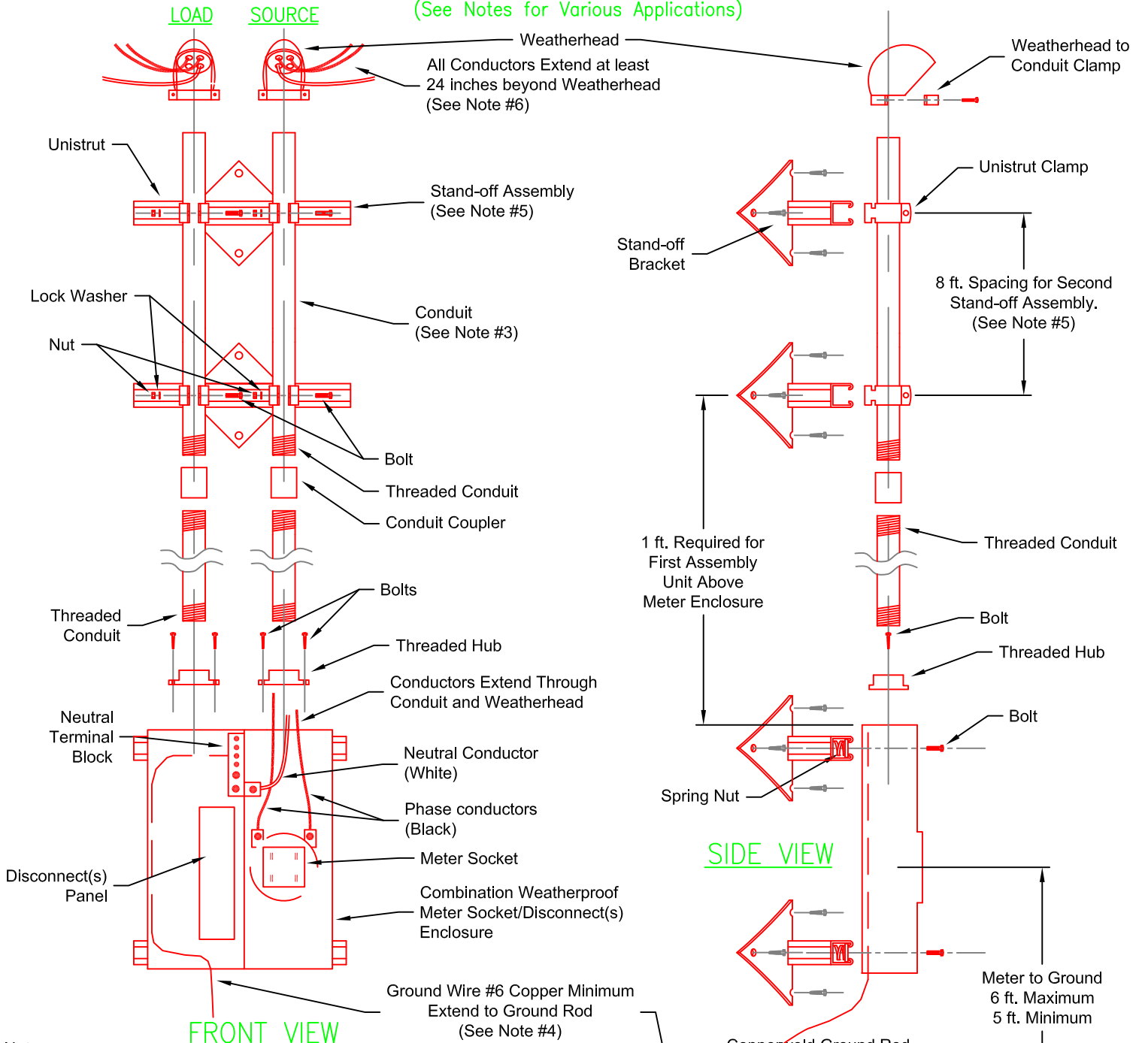


OVERHEAD SOURCE AND LOAD SERVICE INSTALLATION PARTS ASSEMBLY GUIDE

(See Notes for Various Applications)



- Notes:**
1. All facilities (shown in Red) to furnished, assembled and installed by consumer. Installation, if not by Consumer, shall be by a licensed, qualified and trained person.
 2. Final interconnection between Moon Lake and Consumer shall be made by Moon Lake.
 3. Dwellings require a service installation for 100 or more amperes.
 4. 15 ft. of conduit is required for a standard 30 ft pole without a transformer or a 35 ft. pole with a transformer. Add another 3 ft. of conduit for a 40 ft. pole with a transformer.
 5. The grounding electrode system must meet or exceed the requirements of the National Electrical Code Article 250 and must be approved by local building inspector.
 6. Stand-off Assemblies: Two assemblies are required for the enclosure and two assemblies are required above the meter socket/disconnect(s) enclosure and . First assembly above the meter socket enclosure shall be at 1 ft. above enclosure. Second assembly is required 9 ft. above the enclosure.
 7. Service installation on a pole with a transformer will require all conductors to extend beyond the weatherhead at least 7 ft.

		MOON LAKE ELECTRIC ASSOC., INC. <small>Roosevelt, Utah 84066</small>	
REV.	DESCRIPTION	TYPICAL SERVICE INSTALLATION PART ASSEMBLY GUIDE	
0	ISSUED FOR USE.	DRN. BY - M. TERVORT	DATE - 11/10/2022
		APPV. - M. TERVORT	SCALE - N.T.S.
			DRAWING # SOURCELOAD